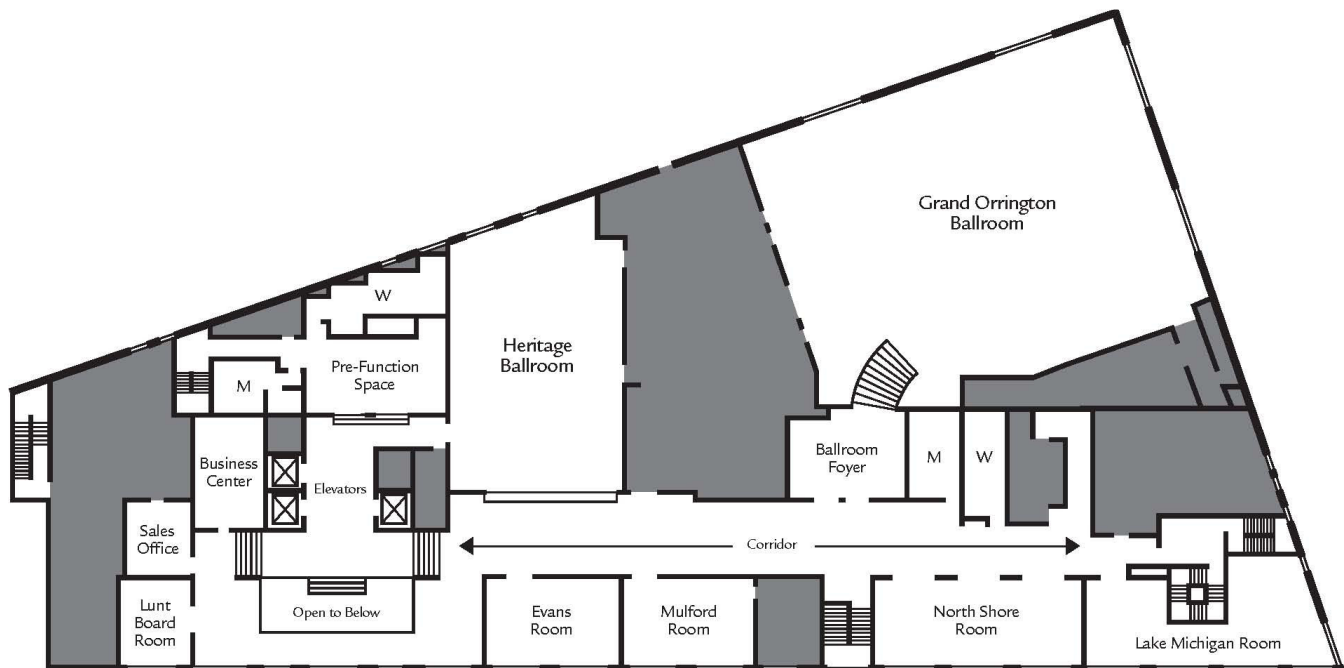
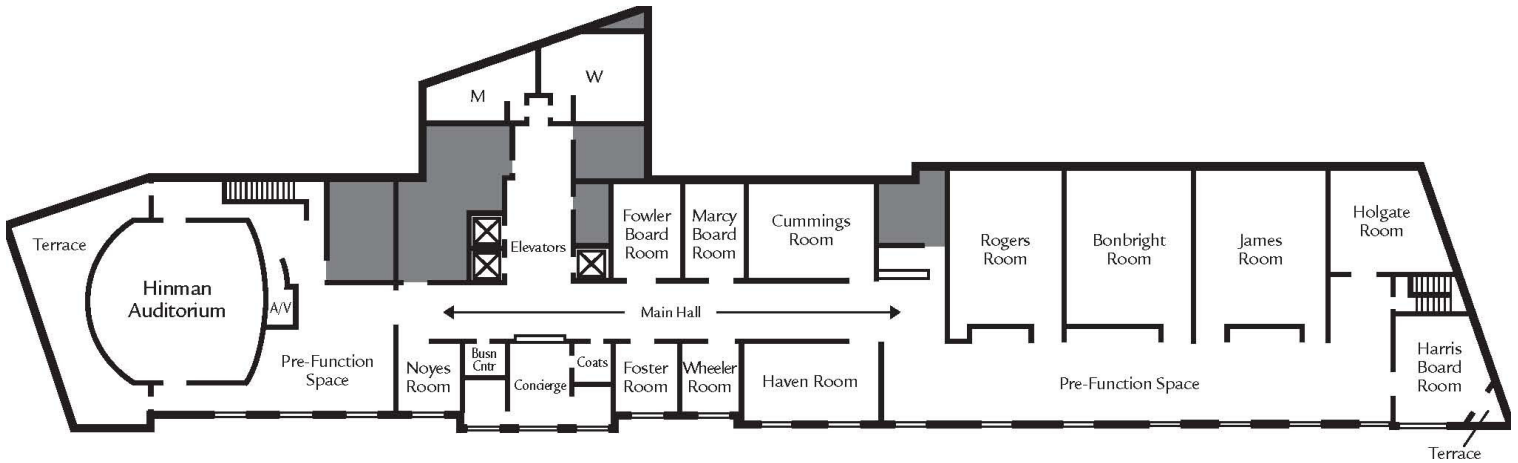


## Second Floor



Name of Room	Total SF	Seating Capacities						
		Reception	Banquet	Dinner/Dance	Classroom	Theater	Conference	U-Shape
Grand Orrington Ballroom	5848	550	450	270	360	550	N/A	N/A
Grand Parlour A	1280	100	90	N/A	72	117	26	30
Grand Parlour B	1544	160	120	N/A	100	160	40	33
Grand Parlour C	1534	125	100	N/A	84	128	32	36
Grand Parlour D	1790	X	X	N/A	N/A	N/A	N/A	N/A
Heritage Ballroom	1695	200	120	85	110	200	40	48
Lake Michigan Room	1026	70	60	N/A	N/A	N/A	N/A	N/A
North Shore Room	846	75	50	N/A	46	80	34	35
Mulford Room	570	30	40	N/A	28	47	20	23
Evans Room	570	30	40	N/A	28	47	20	23
Lunt Boardroom	285	N/A	N/A	N/A	N/A	N/A	10	N/A

## Conference Center 9<sup>th</sup> Floor



Name of Room	Dimensions	Total SF	Banq	Rec	Ceiling Height	Seating Capacities			
						Classroom	Theater	Conference	U-Shape
Hinman Auditorium	L x W 36'-6" x 36'-6"	1245	N/A	N/A	varies	76	N/A	N/A	N/A
Noyes Room	14'-6" x 15'-6"	220	N/A	N/A	12'-6"	N/A	N/A	6	N/A
Foster Room	14'-6" x 15'-6"	220	N/A	N/A	12'-6"	N/A	N/A	6	N/A
Wheeler Room	14' x 13'-6"	210	N/A	N/A	12'-6"	N/A	N/A	6	N/A
Haven Room	29' x 18'	525	N/A	N/A	12'-6"	20	35	18	16
Fowler Board Room	15' x 20'	300	N/A	N/A	12'-6"	N/A	N/A	10	N/A
Marcy Board Room	14' x 20'	270	N/A	N/A	12'-6"	N/A	N/A	10	N/A
Cummings Room	29' x 23'	645	N/A	N/A	12'-6"	24	43	20	18
Rogers Room	25' x 35'	890	N/A	N/A	12'-6"	48	59	24	22
Bonbright Room	29' x 35'	1005	N/A	N/A	12'-6"	54	67	28	24
James Room	31' x 35'	1075	N/A	N/A	12'-6"	60	72	32	28
Holgate Room	23' x 24'	560	N/A	N/A	12'-6"	18	40	16	14
Harris Board Room	23' x 24'	500	N/A	N/A	12'-6"	N/A	N/A	10	N/A
Pre-Function Space	18' X 114'	2052	80	150	N/A	N/A	N/A	N/A	N/A